



Rediscovering Indian Medicine through Modern Science



**SANJEEV BIOMEDICAL RESEARCH CENTRE
DRUG TESTING LABORATORY (ASU)**

Approved by Ministry of AYUSH, Govt. of India & Govt. of Tamilnadu

Broad Spectral Analysis for Indian Medicine





ONE STOP SOLUTION FOR HERBAL FORMULATIONS

VISION & MISSION

Sanjeev Biomedical Research Centre (SBRC) is a Chennai, Tamilnadu based research organisation, established in 2016. The main vision and mission of SBRC is to explore the Indian Medicines through Modern Science for the global acceptance. SBRC is a Drug Testing Laboratory has been accredited by Ministry of AYUSH, Govt. of India & Govt. of Tamilnadu. It has been evaluate and validate ASU drugs for its Quality, Safety and Efficacy through various scientific methods directed by AYUSH. Considering this SBRC is focusing on Standardization, Quality assurance, toxicity and clinical syudy. Scientists working at SBRC are well trained and expert in their respective field.

OBJECTIVES

- » Use of Scientific techniques/ API (Ayurvedic Pharmacopeia) Siddha Pharmacopeia/BIS/IP methods to validate the ASU drugs.
- » Clinical Trials of ASU Drugs
- » Evaluating Molecular Mechanisms for their action using Modern Scientific methods.
- » Identifying the 'Active Ingredients' of ASU Drugs for improving the Efficacy and Reproducibility
- » To support for the development of Phytomedicines.
- » To develop human resource as QC & QA staff for AYUSH Industry.



ASU DRUG TESTING SERVICES TO AYUSH INDUSTRY

We offer Research Support Services to AYUSH industry to enhance the public acceptability of their drugs as well as better compliance with regulatory requirements by detailed testing and characterization of the ASU drugs aspects of preclinical and clinical studies of new drugs and formulations with all the required documentation practices. We have diverse clients from INDIA and abroad.

SBRC has **Chemistry, Microbiology** and **Cell and Molecular biology** division along with **Zebra fish facility** for in-vivo animal study.

Some of the ASU Drug Testing & Research support services offered by us,

Routine ASU Drug Analysis

- Physico-chemical parameters
- Heavy Metal analysis
- Minerals and other Micronutrients
- Nutritional analysis
- Microbial analysis
- Aflatoxin
- Finger printing & Phytochemical analysis (TLC, HPTLC ,HPLC)
- Pesticide residue analysis (Qualitative and Quantitative)
- Shelf Life study (Stability study)
- Toxicity studies (Cytotoxicity , acute & sub acute)
- Skin irritation/ toxicity
- Routine biological & Enzyme screening assays
- Specialized Molecular Biological Assays for mechanistic investigations
- Pharmacological assays for Efficacy (in vitro & in vivo Zebrafish)



Routine Microbial Assays for Efficacy of ASU/ Drugs

- Antibacterial and antifungal activity
- Time Kill Assay

Analysis of Herbal Hand wash/ Sanitizer & Mosquito Repellent/ Agarbathi

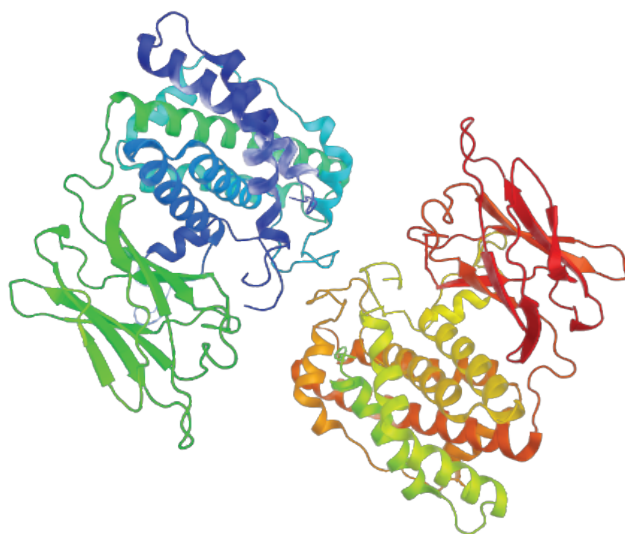
Specialized in vitro (Cell line) assay

Specialized services at the SBRC offer wide spectrum solutions to understand AYUSH/ASU formulations.

- Anticancer assay
- Antiviral
- Anti diabetic assay
- Anti migraine
- Wound healing assay
- Assays for Cardiovascular diseases (Angiogenesis)
- Anti inflammatory
- Immunomodulatory
- Gene Expression study

Nitric Oxide and Oxidative Stress

Nitric oxide is a core signaling molecule with diverse functions implicated in hypertension, angiogenesis, and wound healing and so on. Any ASU formulation offering solutions to such conditions can be studied using Nitric oxide estimation (cells/tissue) using the GRIESS, Glutathione and SOD assay etc.,



Food Analysis

- Nutritional analysis
- Honey and water analysis
- Glycemic index
- Aflatoxin

Customised Mechanistic Investigations

In addition to the above generic services, SBRC also offers customized research studies for assessing the mechanism of action of particular ASU formulations based on the needs of the client.

Invivo Pharmacological Analysis - Zebrafish Model

More specialized investigation to study

- Toxicity ■ Teratogenicity ■ Assay for incompatible food
- Antidiabetic activity ■ Cardiogenic ■ Cardiotoxicity

CLINICAL TRIALS FOR ASU DRUGS:

Apart from Research and Development in the field of AYUSH system in different areas such as drug development including quality assurance, pre-clinical study, and safety evaluation which mentioned above, Clinical Research, clinical trials for proprietary ASU drugs are being conducted in SBRC following the principles of GCP. We conduct observational and Experimental (Randomized and Non randomized) clinical studies for Herbal formulation.

BIOINFOMATICS STUDY

We routinely do Molecular Docking study as a preliminary efficacy study of known ASU Sastric and Proprietary Medicines.



WORKSHOP IN AYUSH PHARMA TECH

SBRC routinely conducts a specialized 'AYUSH PHARMA TECH' training programme, to address this need of the AYUSH Industries.

SBRC periodically conducts hand on in-vitro mammalian Cell culture and in-vivo Zebrafish assay training programme for mechanistic investigations of drug action.

Dr. M. S. Ramasamy, Ph.D.,
Head, Research & Development
SANJEEV BIOMEDICAL RESEARCH CENTRE

